



Automation for sliding gates up to 1500Kg

QUALITY, STYLE & RELIABILITY ?

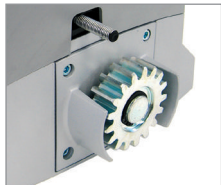
Made in Italy, the home of gate automation, the 24 Volt King 'DYNAMOS' sliding gate automation system is a stylish and modern unit. It is powered by a 24 Volt transformer and can move up to 1500 kg in weight.

This is an excellent quality, modern, safe, well engineered sliding gate automation system which incorporates the latest technical innovation in sliding gate automation.

It features are as follows:

- * Suitable for domestic and industrial sliding gates
- * A very reliable electromechanical motor which is extremely quiet.
- * Optional battery back up - no need to worry about electricity failure
- * A very safe system, uses 24 volt technology suitable for continuous use.
- * Built in anti crush so the gate reverses if it encounters an obstacle
- * Adjustable programming.
- * Easy to install, fully programmable control board and built in receiver
- * Many accessories available

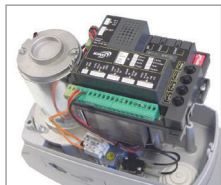
BEST IN CLASS 3 YEARS* WARRANTY



Silent mechanics



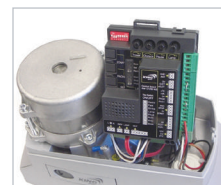
Manual key release



Simple set-up



4.5 Kg of aluminium



Protected electronics

TECHNICAL DATA		Dynamos 400 Fast	Dynamos 600	Dynamos 1200
Power supply	(Vac 50Hz)	240	240	240
Motor power supply	(Vac/Vdc)	24	24	24
Motor power	(W)	40	80	80
Temp	(°C)	-20 ÷ +55	-20 ÷ +55	-20 ÷ +55
Operating temperature	(°C)	-	-	-
Speed	(m/min)	15 ÷ 22	9 ÷ 15	9 ÷ 15
Cycle of work	(%)	50	80	80
Dimensions	(mm)	325x185x274	325x185x274	325x185x274
Automation weight	(Kg)	9	11	11
Gate max weight	(Kg)	400	600	1000



- * Quality Italian product
- * Build for Australia
- * Solar power optional
- * 3yr warranty on motors

CONTACT LITESTART - PERTH AUTO GATES

Sliding gate motor accessories

RAC400KGI / RAC800KGI



Nylon rack with metal inserts.
28x20x1000

RAC 2000KGI



Rack in galvanized steel
with screws and spacers.
30x12x1000

SLA RAISE PLATE



High 30mm raised Plate

KSW 100



Key Switch WAS

REC FRED 2 KGI



Garage door opener

KPD 500 KGI



Keypad 500 codes

KPDWLKGI



wireless keypad
3 codes

SLA BACKUP 1.2



Battery backup 1.2 A/H

PE VIKY



Safety beam set

ANT433



Antenna

LOOP CTRL



Ground loop

LITE O



Courtesy light

PE POST 500/1000



Safety beam towers

PE WLESS 2



wireless beam

SOLPWR30WKIT



Solar power kit